

Focal seizures with left hemibody piloerection related to left hemisphere cavernous angiomas

Benjamin P. Whatley¹, Cory Jubenville¹, David B. Clarke², R. Mark Sadler¹

¹Dalhousie University Division of Neurology, Halifax, Nova Scotia, Canada

²Dalhousie University Division of Neurosurgery, Halifax, Nova Scotia, Canada

Key words: focal epilepsy; epilepsy surgery; hippocampal sclerosis; neuropathology.

Correspondence: bwhatley@dal.ca

For details visit the Multimedia Teaching Material/ **Neuroimaging** Section of the website www.epilepticdisorders.com



Figure 1. Ictal semiology included left hemibody piloerection with retained awareness.

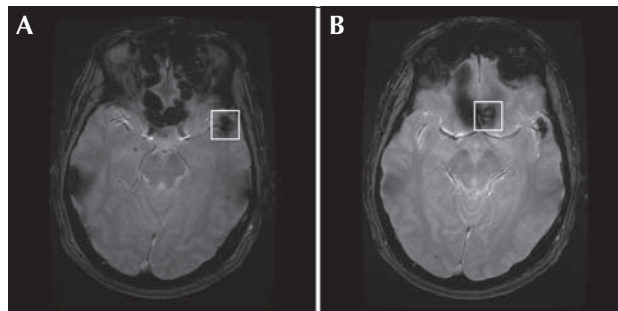


Figure 2. MRI revealed the presence of several cavernous angiomas with typical “pop-corn” appearance, involving the left temporal pole and left gyrus rectus.