

Sotos syndrome: a pitfall in the presurgical workup of temporal lobe epilepsy

Linda Bättig¹, Richard Rosch¹, Katharina Steindl^{2,3}, Sarah Elisabeth Bürki^{1,2}, Georgia Ramantani^{1,2,4*}

¹Department of Neuropediatrics,
University Children's Hospital
Zurich, Switzerland

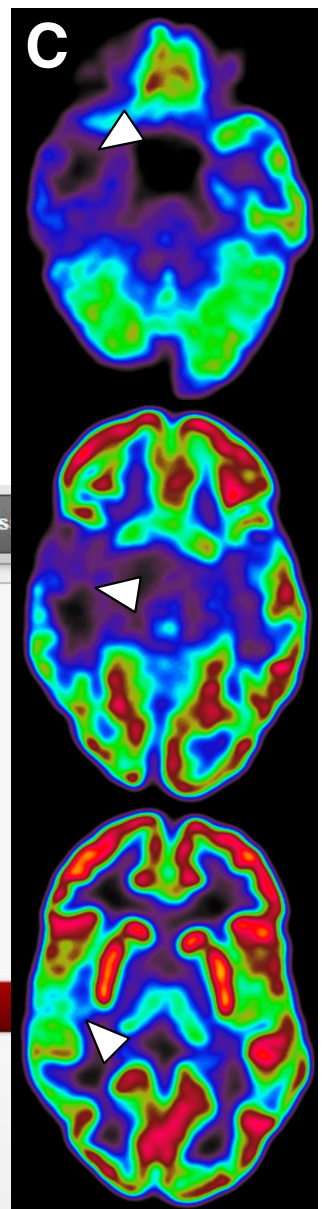
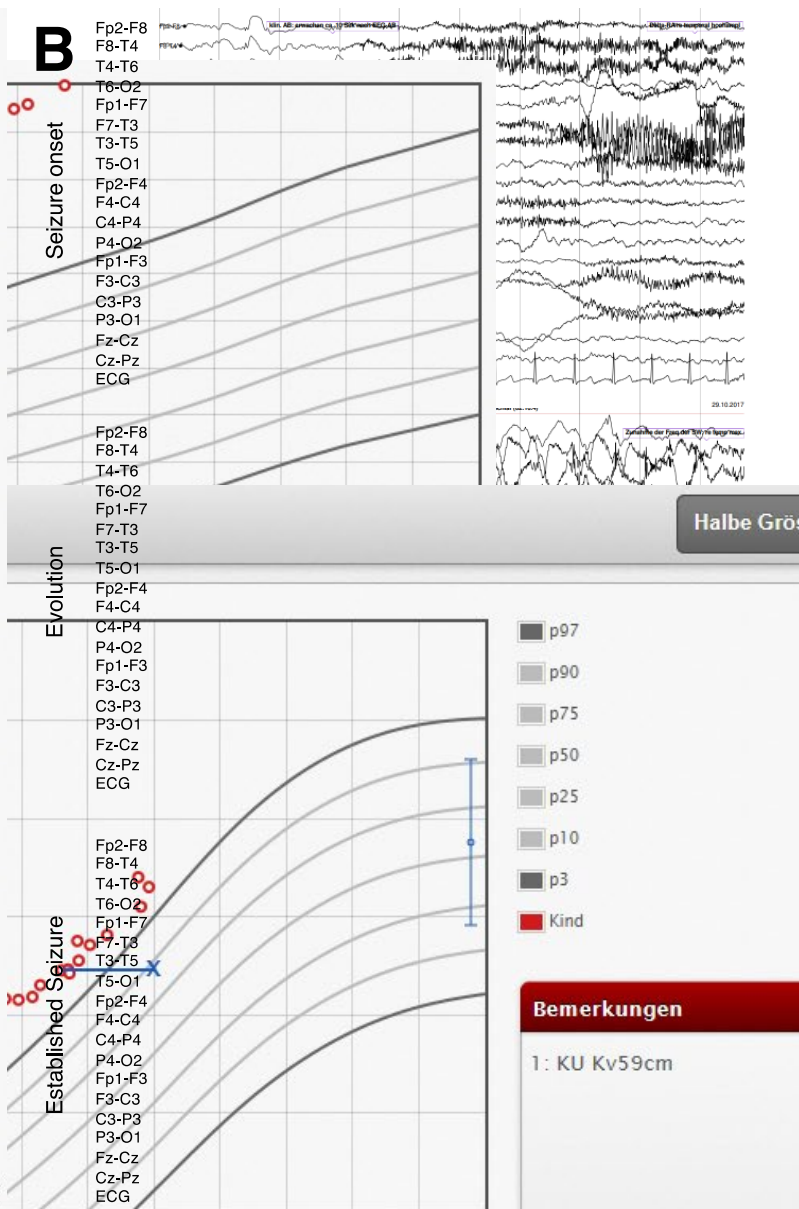
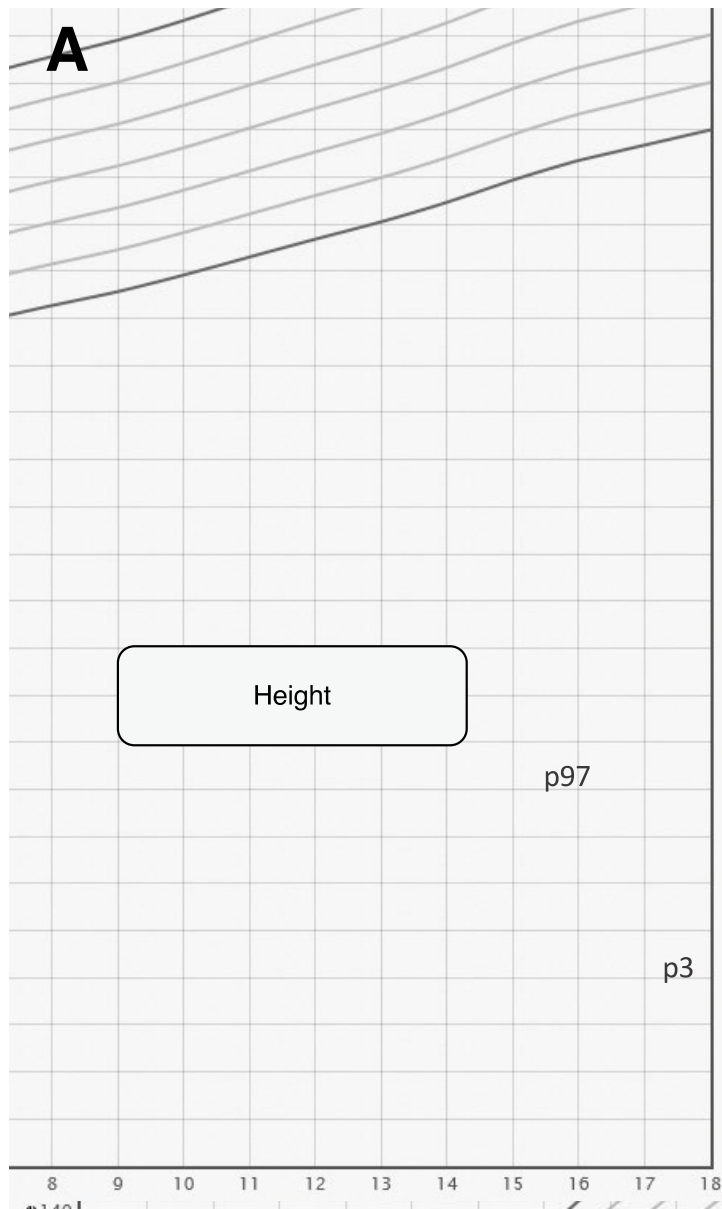
²University of Zurich, Switzerland

³Institute of Medical Genetics,
Zurich, Switzerland

⁴Children's Research Centre,
University Children's Hospital
Zurich, Switzerland

Sotos Syndrome: A Pitfall in the Presurgical Workup of Temporal Lobe Epilepsy

- Seizures are frequent in patients with Sotos syndrome, often occurring with temporal lobe semiology and ictal EEG patterns in the absence of a brain lesion.
- This case highlights Sotos syndrome as a rare but important pitfall in the presurgical workup of temporal lobe epilepsy that should be considered particularly in MRI-negative cases but also in the presence of a focal lesion that does not fully explain the clinical picture.
- Our observations underline the value of thorough presurgical diagnostics including genetic testing, even in apparently straightforward cases of lesional epilepsy, to rule out an underlying genetic aetiology that may prevent surgical success.



Epileptic
Disorders