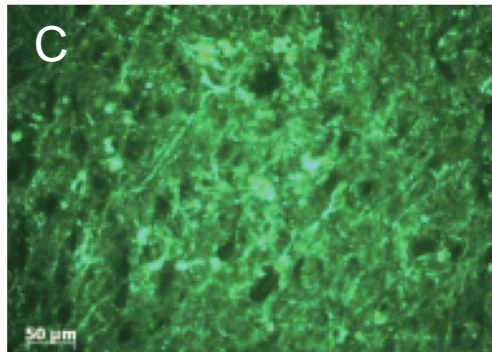
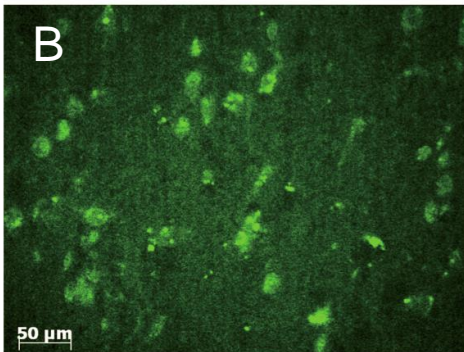
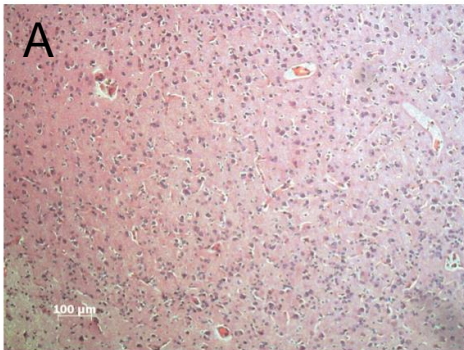


Supplementary Figure 2



(A) Haematoxylin and eosin staining of the patient's tumour (scale bar: 100 µm). Immunofluorescence staining of the patient's tumour with rabbit anti-NR1 antibody and FITC-anti-rabbit IgG: of glial cell cytoplasm (B) and fibrous components in another area of the tumour (C) (scale bar: 50 µm).