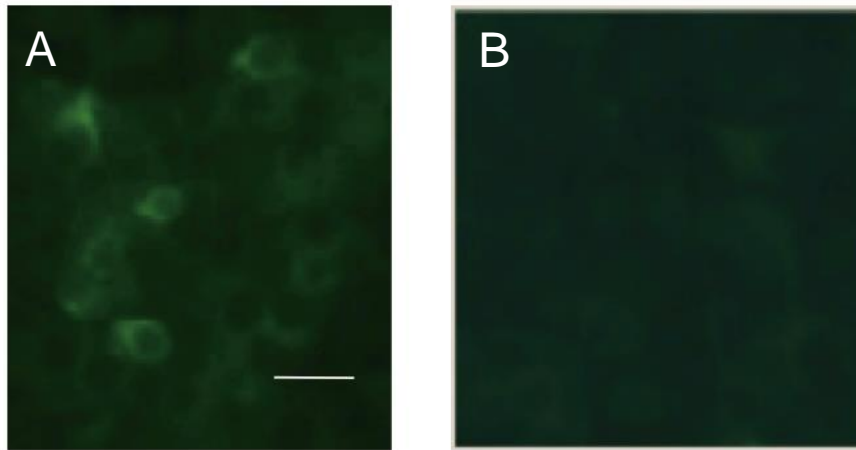
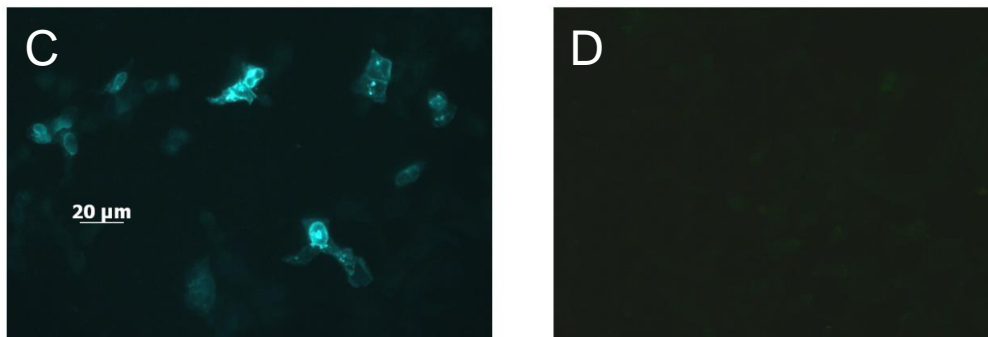


Supplementary figure 1



(A) NMDAR NR1-transfected HEK cells were incubated with the patient's CSF and stained with FITC-anti-human IgG. (B) HEK cells transfected with empty vector were not recognized by the patient's CSF (scale bar: 20 μ m).



(C) NMDAR NR1 and NR2-transfected HEK cells were incubated with the patient's CSF and stained with FITC-anti-human IgG. (D) HEK cells transfected with empty vector were not recognised by the patients's CSF (scale bar: 20 μ m).